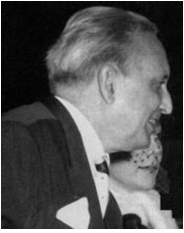


GALERIE MARCILHAC

XXth CENTURY DECORATIVE ARTS
PARIS



SERGE ROCHE (1898-1988)

Serge Roche was born in 1898. Son of an art dealer, he knows from childhood, artists like Picasso or Renoir attending his father's shop. Roche toured Europe and then back to Paris he organized his first exhibition in his apartment on the theme of the French setting. In 1934, he designed his own "Ice objects"; the following year he exhibited antique mirrors and "Ice objects" and modern glass. It also performs Baroque trend decors where he joined his creations between the stucco mirror. The triumph is immediate in France and on the other side of the Atlantic. Roche makes for more than thirty years of furniture, objects and scenery with fond clients including Coco Chanel, Ali Khan, the Noailles, Arturo Lopez and Carlos de Beistegui. He died in 1988.



GALERIE MARCILHAC

8, rue Bonaparte, 75006, Paris, France // Tel : 00 33 (0)1 43 26 47 36 // Fax : 00 33 (0)1 43 54 96 87
Email : info@marcilhacgalerie.com // Internet : www.marcilhacgalerie.com // SIRET : 510 899 545 000 48