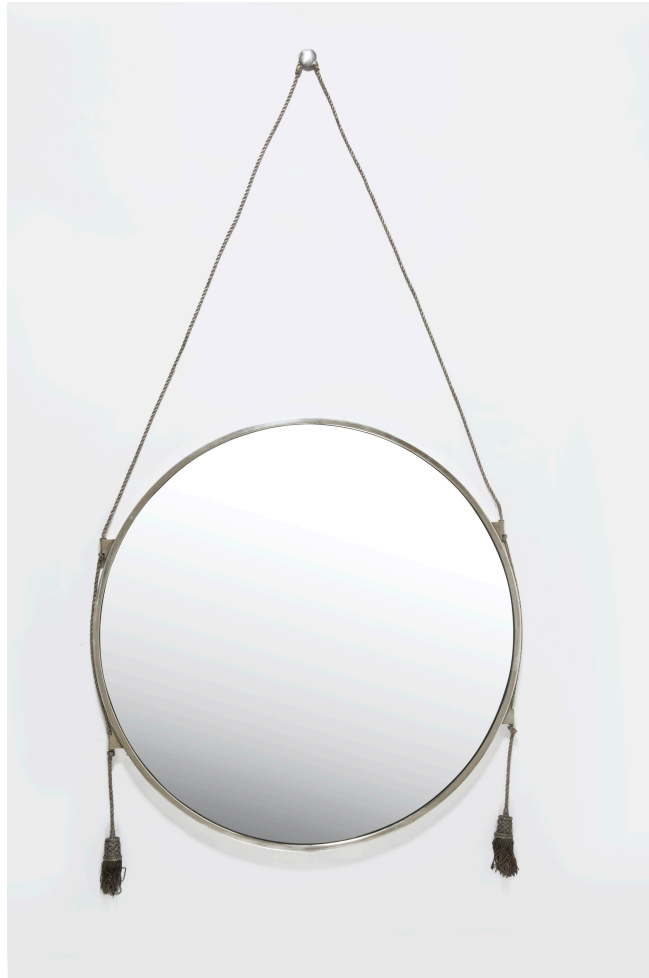


GALERIE MARCILHAC

XXth CENTURY DECORATIVE ARTS
PARIS



JACQUES-ÉMILE RUHLMANN (1879-1933)

Large Circular Mirror, circa 1928

A large circular mirror in silver bronze with two lateral fasteners with double support in which slide a trimmed cord and a silver wire tassel.

H 95,5 - L 100,5 cm (H 37.6 - W 39.6 in)

HISTORIQUE

This mirror was made for a private mansion built by the architect Pierre Patout between 1923 and 1924 on rue Albert Magnard in the 16th arrondissement of Paris. Jacques-Émile Ruhlmann, a great friend of the owner, arranged the hotel until 1928. This one was sold in 1930, then destroyed in 1968.

BIBLIOGRAPHIE

Emmanuel Bréon, "Jacques-Émile Ruhlmann, Les Archives", Paris, Éditions Flammarion, 2004, croquis du miroir p. 53.

Emmanuel Bréon, "Ruhlmann : un génie de l'Art Déco", Paris, Somogy, 2011, modèle similaire reproduit p. 50 et croquis d'un miroir similaire p. 272.

GALERIE MARCILHAC

8, rue Bonaparte, 75006, Paris, France // Tel : 00 33 (0)1 43 26 47 36 // Fax : 00 33 (0)1 43 54 96 87
Email : info@marcilhacgalerie.com // Internet : www.marcilhacgalerie.com // SIRET : 510 899 545 000 48